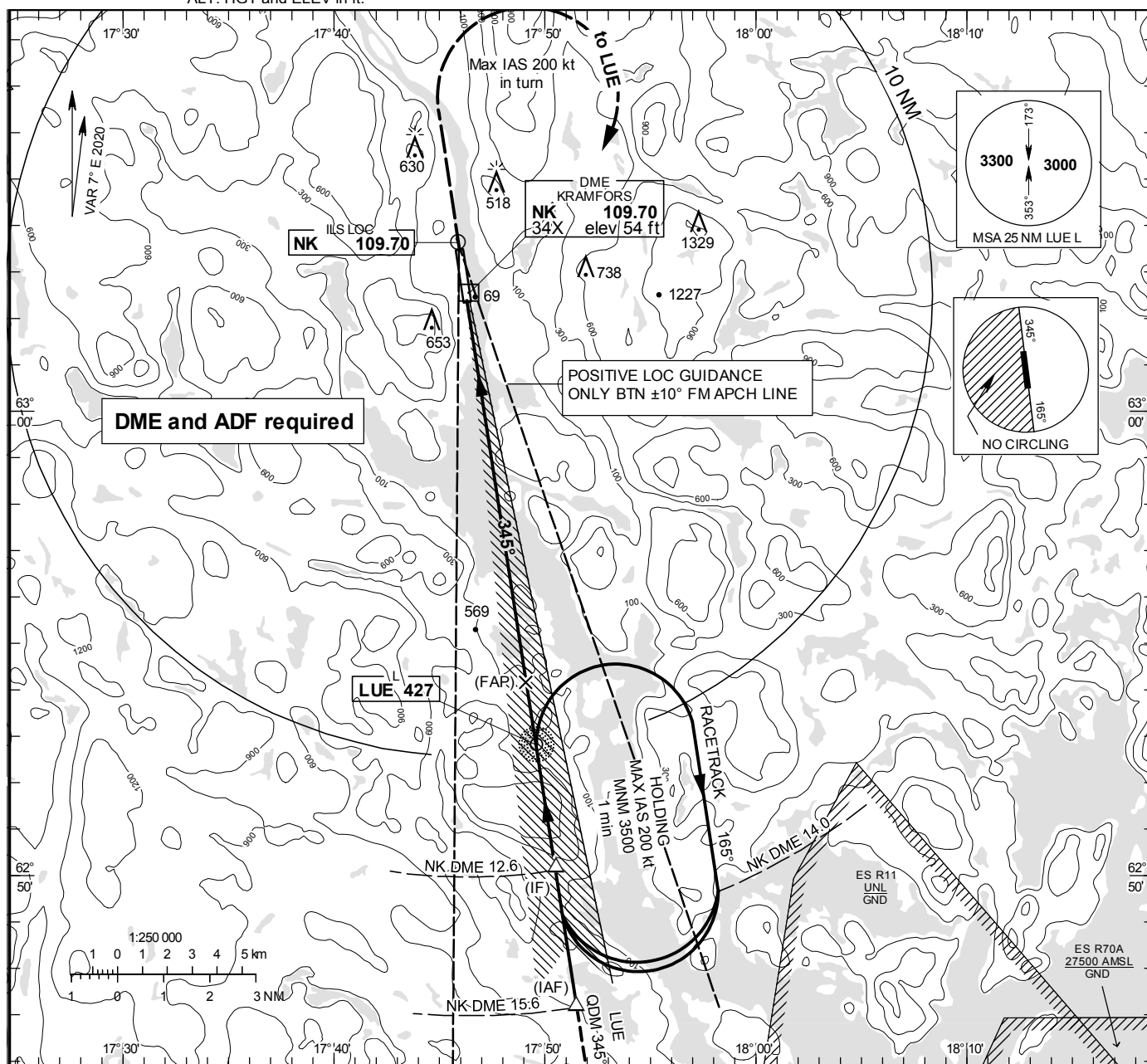


KRAMFORS-SOLLEFTEÅ
ILS or LOC RWY 35**INSTRUMENT
APPROACH
CHART – ICAO**

THR ELEV 23.5 ft, AD ELEV 36 ft
OCH are related to THR.
Circling OCH are related to AD ELEV.
BRG are MAG
ALT, HGT and ELEV in ft.

KRAMFORS
INFORMATION

122.155

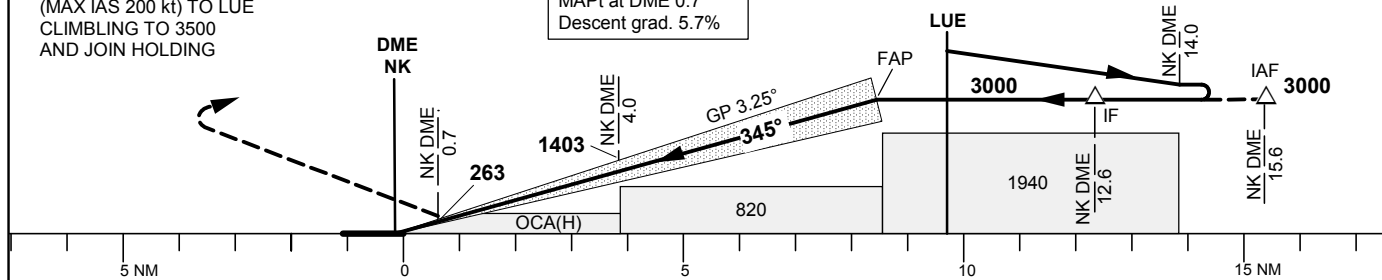


TA 5000 ft RDH 50.9 ft RACETRACK MAX IAS 200 kt *Timing not authorized for defining the MAPt

CLIMB STRAIGHT AHEAD
TO 1700, TURN RIGHT
(MAX IAS 200 kt) TO LUE
CLIMBLING TO 3500
AND JOIN HOLDING

LOC
FAF at DME 8.6 3000
NK DME 4.0 1410
MAPt at DME 0.7
Descent grad. 5.7%

OM replaced by NK DME 4.0
MM replaced by NK DME 0.7



OCA (H)						Final approach	LOC Distance FAF-MAPt 7.9 NM*						
Cat of ACFT		A	B	C	D	DME NK NM	8	7	6	5	4	3	2
Straight-in Approach	CAT I	172(149)	182(159)	196(173)	209(186)	ALT	2780	2440	2090	1750	1400	1060	710
	LOC	670(650)				GS	kt	80	100	120	140	160	180
Circling E RWY		820(790)	1040(1010)	1630(1600)	1730(1700)	Time	min:s	5:56	4:45	3:57	3:23	2:58	2:38
						Rate of descent	ft/min	460	575	690	805	920	1035

CHANGE: Editorial